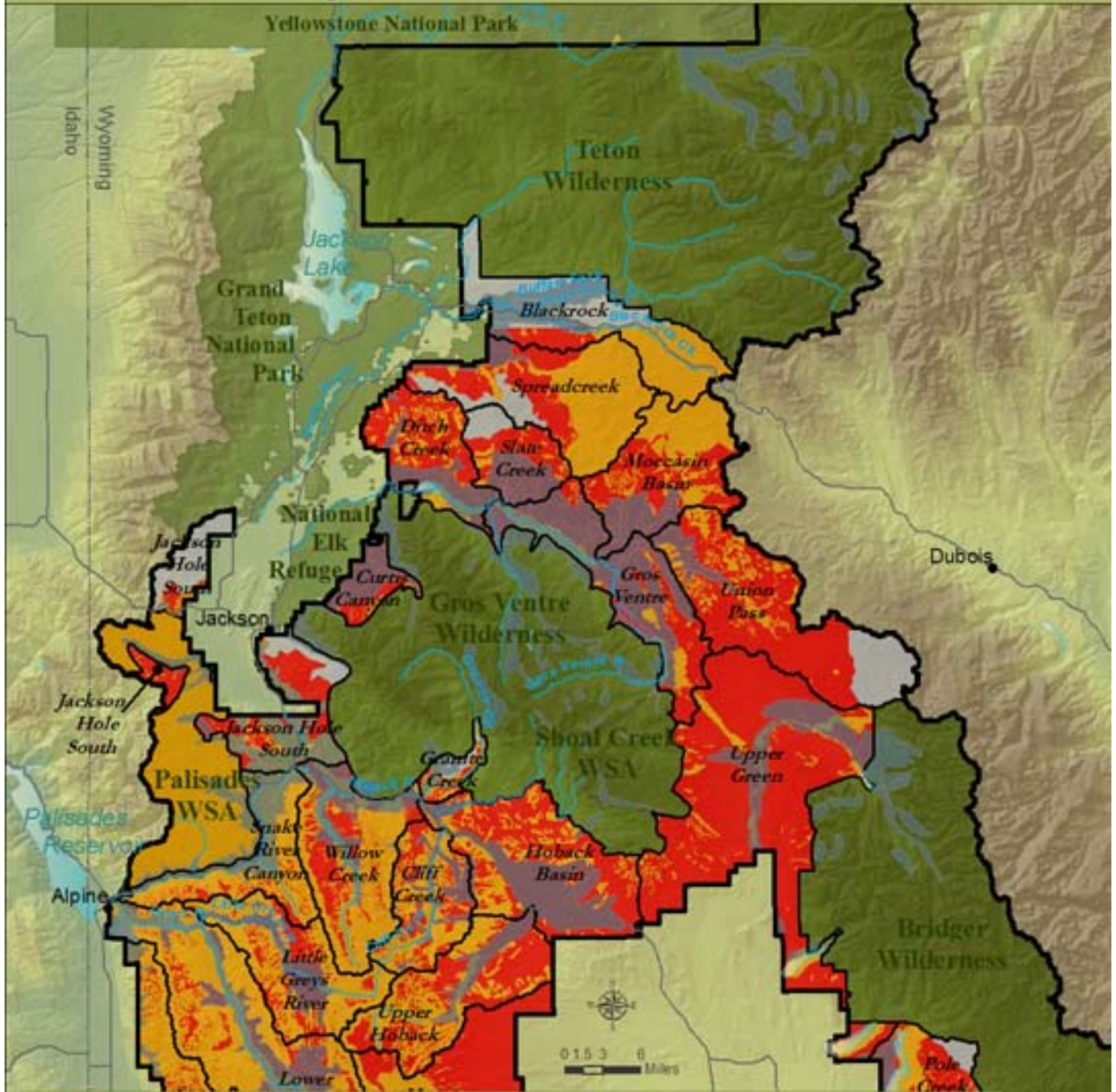


Crucial Winter Range and Oil & Gas Leasing Potential

The Bridger-Teton National Forest in Jackson Hole Area



- Wilderness, Parks & Refuge
- BTNF Management Areas
- Eligible Wild & Scenic River
- Crucial Winter Range
- Open for New Leasing: Standard / Ltd. Stipulations*
- Open for New Leasing: No Surface Occupancy*
- Not Suitable for New Leasing*

*Source: BTNF 1990 Forest Plan

