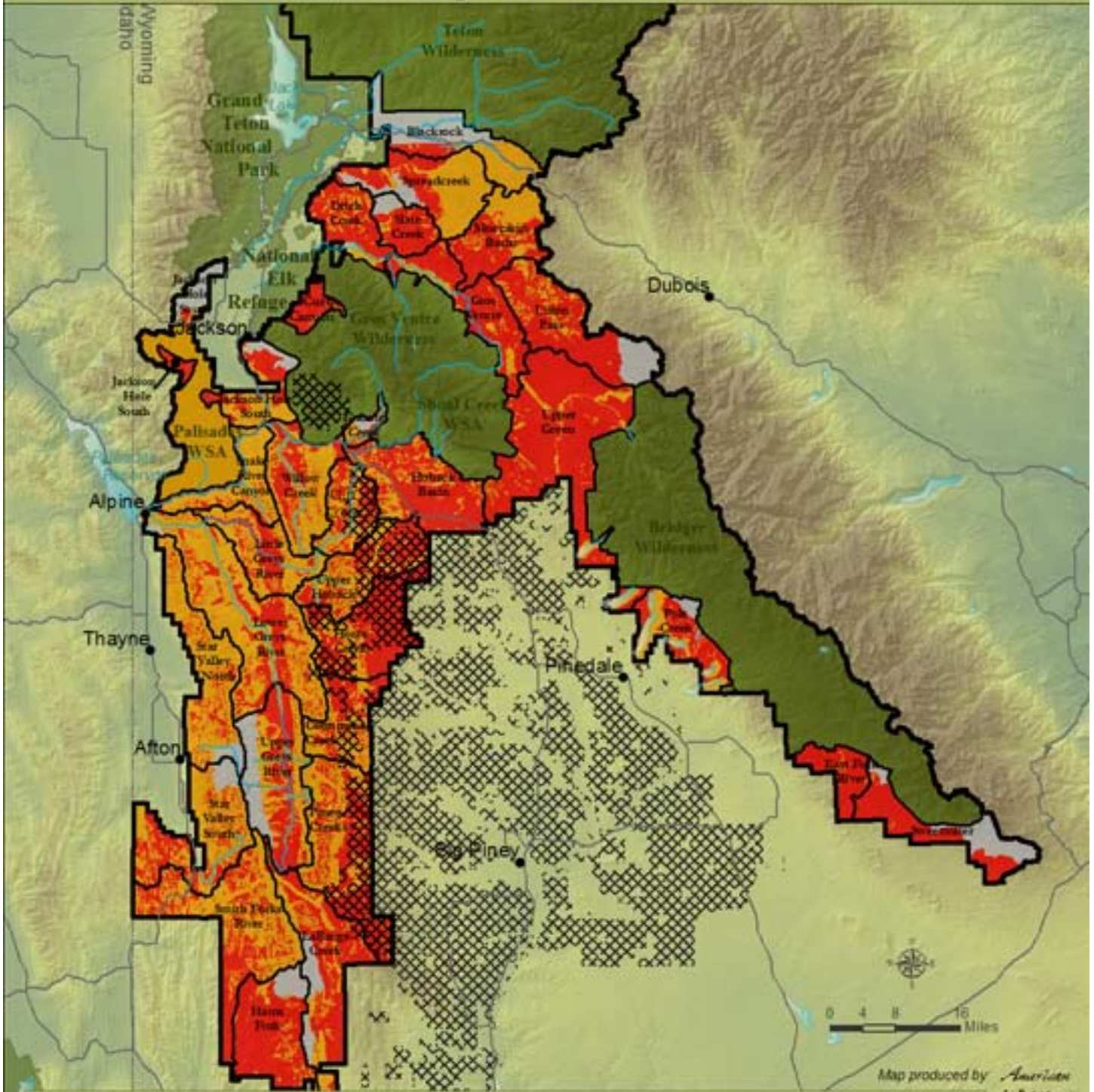


Oil & Gas -- Existing Leases and New Leasing Potential

The Bridger-Teton National Forest



Map produced by *American Wildlands*

- Wilderness, Parks & Refuge
- Open for New Leasing: Standard / Ltd. Stipulations*
- Eligible Wild & Scenic River
- Open for New Leasing: No Surface Occupancy*
- BTNF Management Areas
- Not Suitable for New Leasing*
- Existing Oil & Gas Leases

* Source: 1990 BTNF Forest Plan

