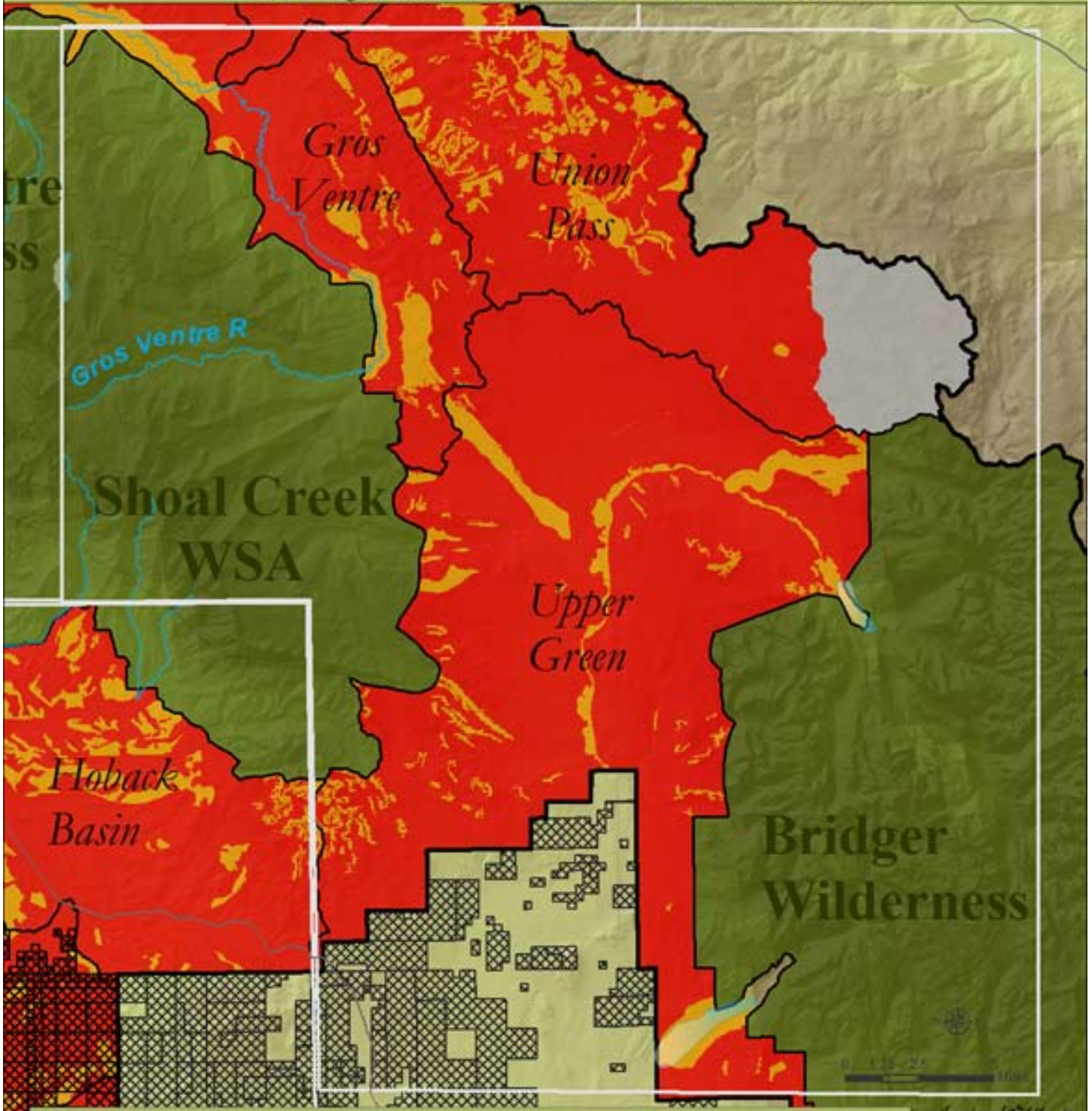


Oil & Gas Leasing Potential and Eastern Priority Focus Area

The Bridger-Teton National Forest in Jackson Hole Area



- Wilderness, Parks & Refuge
- BTNF Management Areas
- Priority Focus Areas
- Eligible Wild & Scenic River
- Existing Oil & Gas Leases
- Open for New Leasing: Standard / Ltd. Stipulations
- Open for New Leasing: No Surface Occupancy
- Not Suitable for New Leasing

