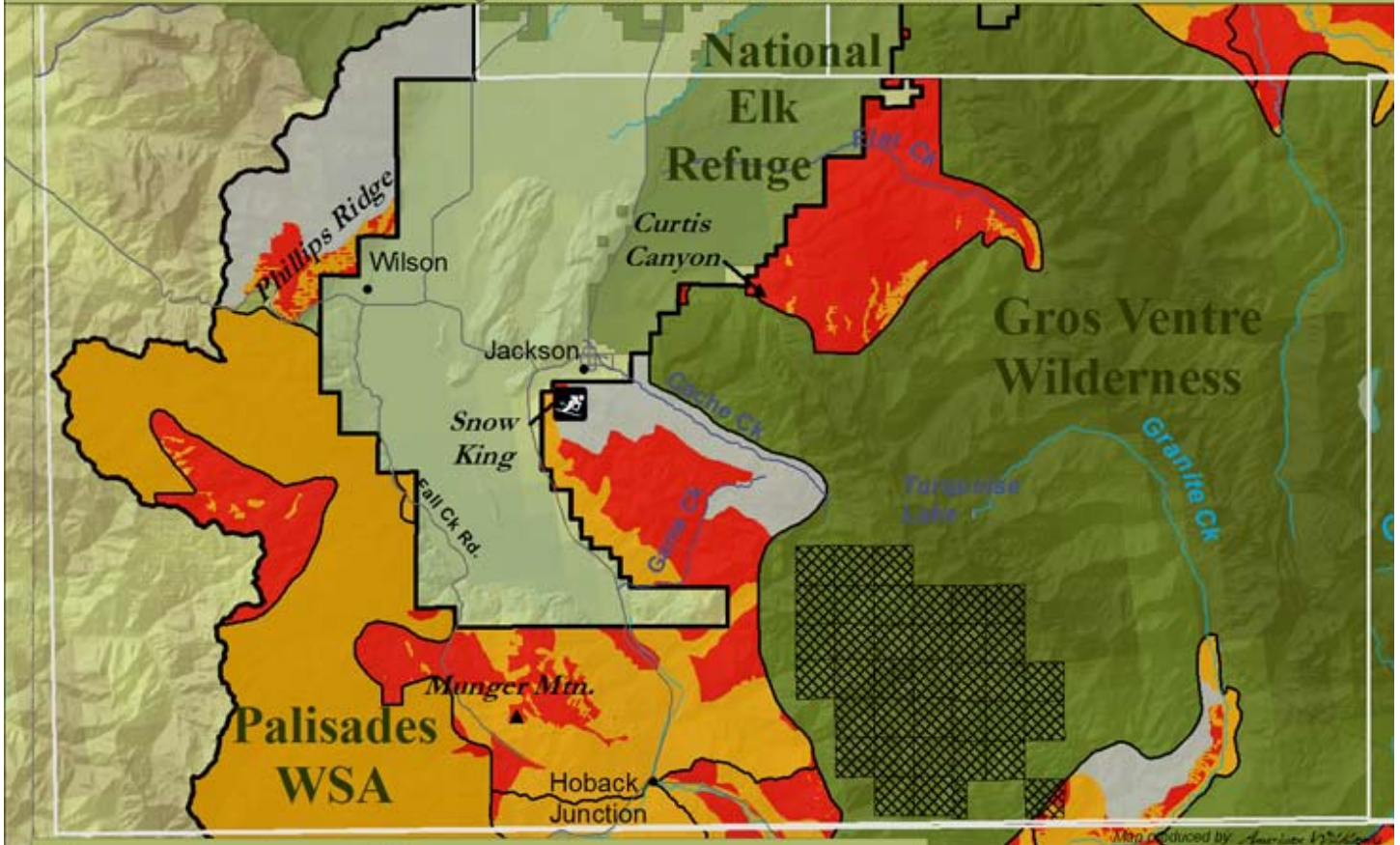


*Oil & Gas Leasing Potential and Western Priority Focus Area*  
 The Bridger-Teton National Forest in Jackson Hole Area



- Wilderness, Parks & Refuge
- BTN Management Areas
- Priority Focus Areas
- Open for New Leasing: Standard / Ltd. Stipulations
- Open for New Leasing: No Surface Occupancy
- Not Suitable for New Leasing
- Existing Oil & Gas Leases

