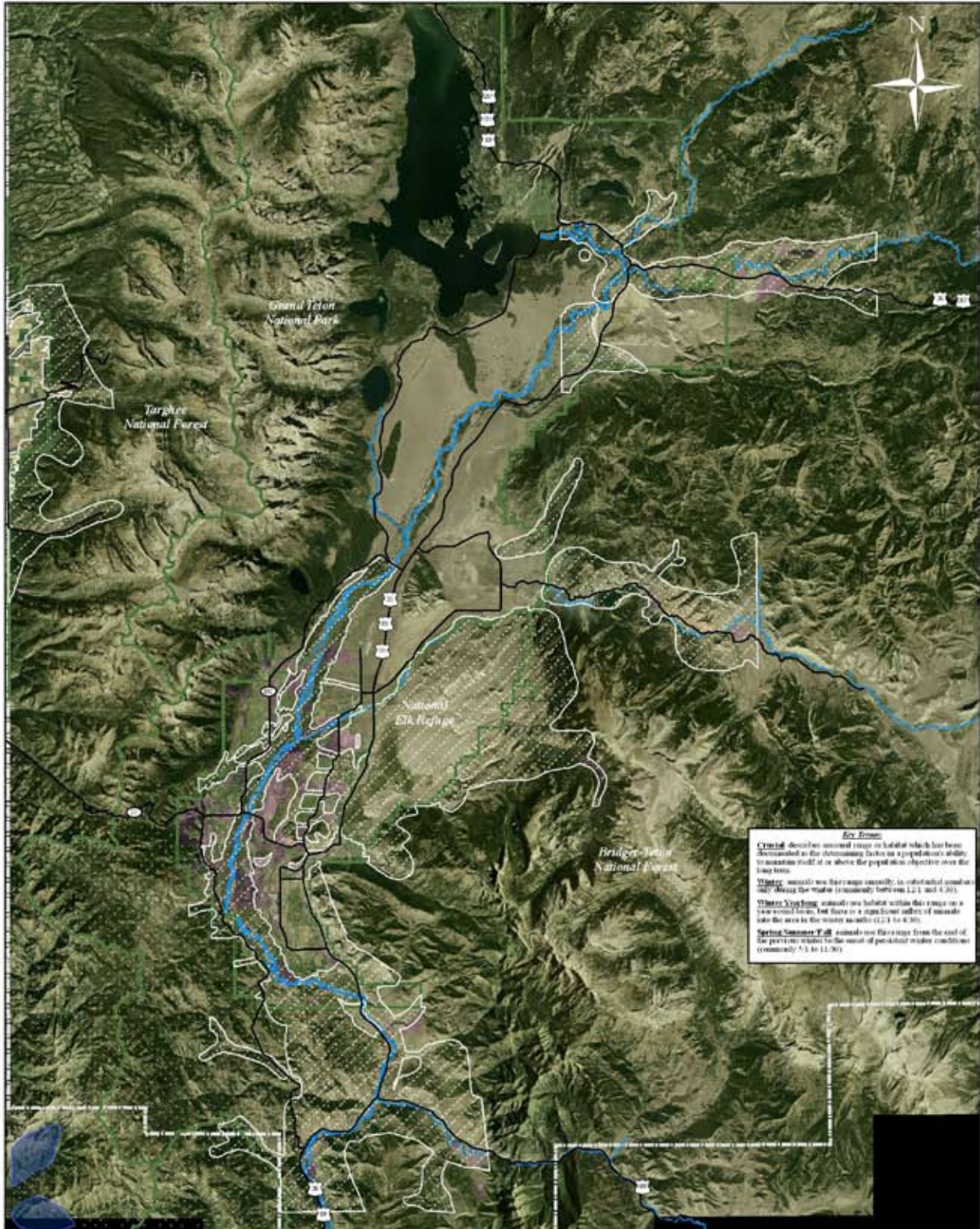


Rocky Mountain Goat Habitat



Key Terms

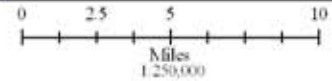
Crucial describes essential range or habitat which has been demonstrated to be indispensable to a population's ability to maintain itself at or above the population objective over the long term.

Winter animals use this range annually, in substantial numbers and along the winter (commonly between 12/1 and 4/30).

Winter Yearlong animals use habitat within this range on a year-round basis, but there is a significant influx of animals into the area in the winter months (12/1 to 4/30).

Spring/Summer/Fall animals use this range from the end of the previous winter to the onset of persistent winter conditions (commonly 5/1 to 11/30).

- NRO
- Crucial Winter/ Crucial Winter Yearlong Range
- Conservation Easements
- Spring Summer Fall Range
- Federal Land
- Major Roads
- Teton County



Seasonal Range: WOFD and the Wyoming Open Spaces Initiative
 NRO, Conservation Easements, Roads and Administrative Boundaries: Teton County GIS Data Archive
 Aerial Photo: 2006 National Agricultural Inventory Program (NAIP)