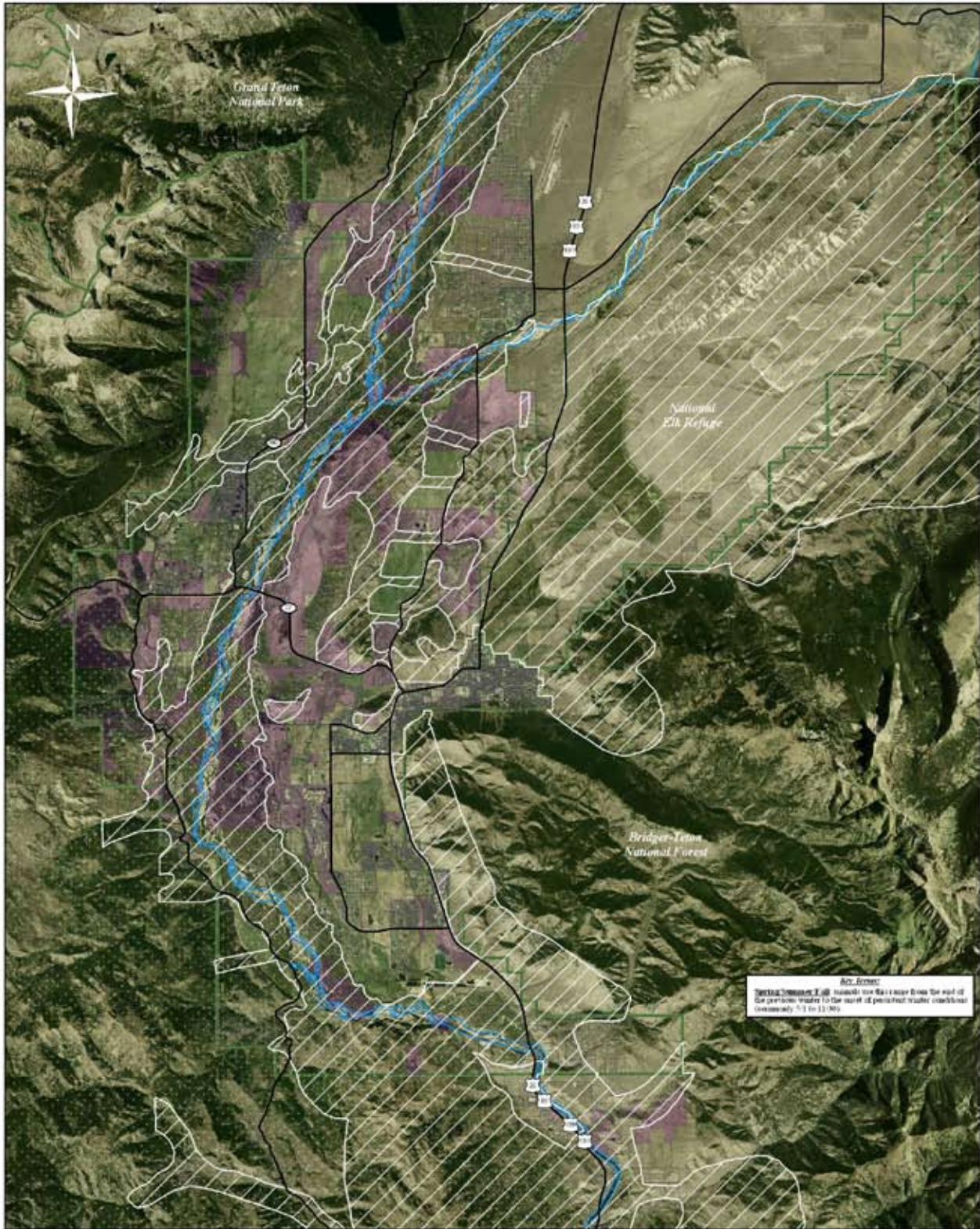
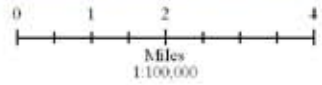


Rocky Mountain Goat Habitat



Six Rivers:
 Spring/Summer/Fall season use the rivers from the west of the portion under the north of present water conditions commonly 7-1 to 11-90.

- Spring/Summer/Fall Range
- NRO
- Conservation Easements
- Federal Lands
- Private Lands
- Major Roads



Seasonal Ranges: WOFD and the Wyoming Open Spaces Initiative
 NRO, Conservation Easements, Parcels, Roads and Administrative Boundaries: Teton County GIS Data Archive
 Aerial Photo: 2006 National Agricultural Imagery Program (NAIP)