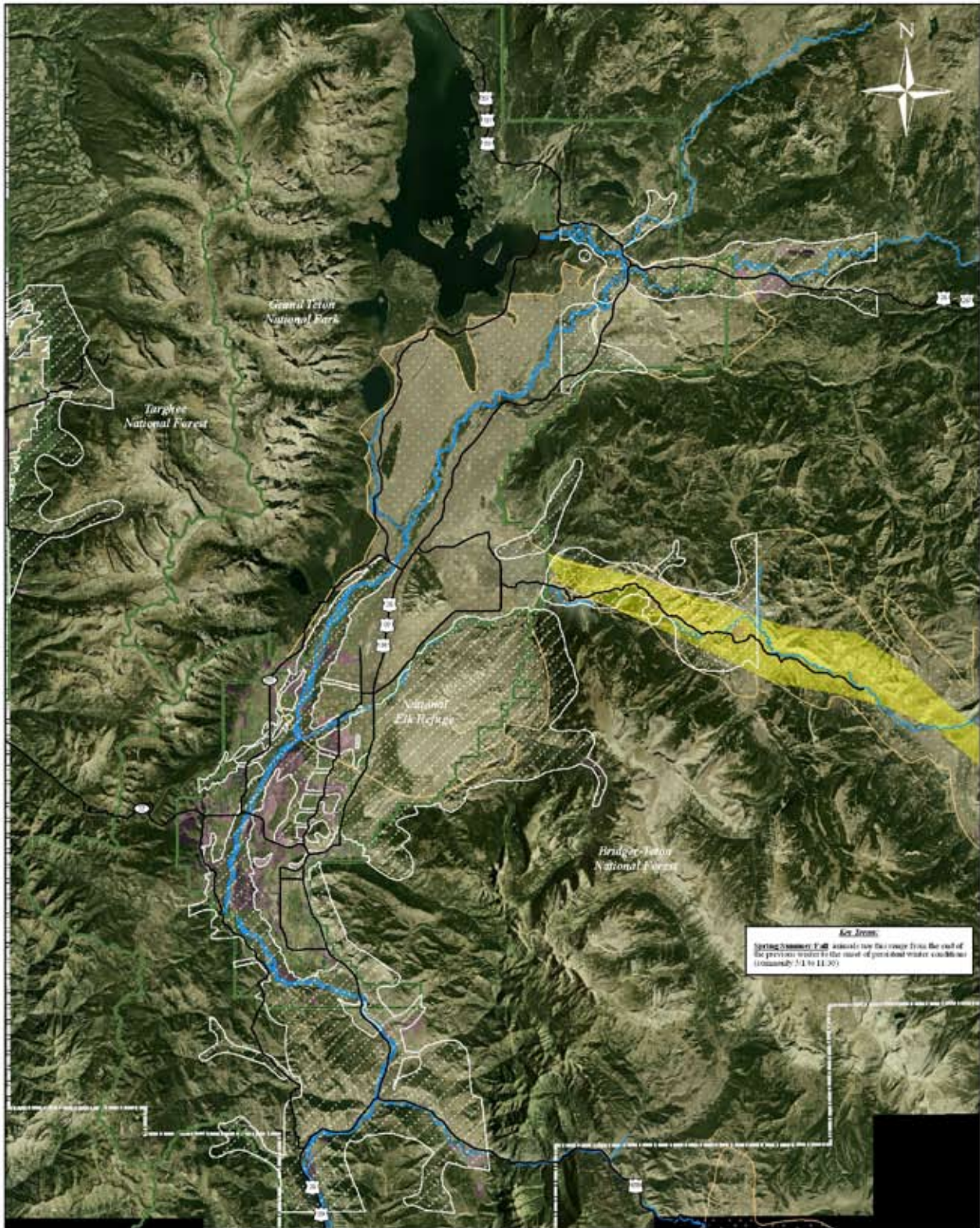
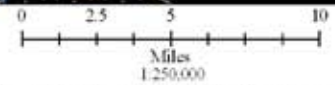


Pronghorn Antelope Habitat



- NRO
- Conservation Easements
- Federal Land
- Teton County
- Major Roads
- Spring Summer Fall Range
- Migration Corridor



See Here.
Spring Summer Fall animals use this range from the end of the previous winter to the onset of persistent winter conditions (usually 3/1 to 11/30)

Migration Corridor: 2004 Grand Teton National Park and Wildlife Conservation Society
Seasonal Range: WCPB, the Wyoming Open Space Institute, and Conservation Research Center per personal communication with Steve Cain, Grand Teton National Park
NRO, Conservation Easements, Roads and Administration Boundaries: Teton County GIS Data Archive
Aerial Photo: 2006 National Agricultural Inventory Program (NAIP)
Data assembled by Conservation Research Center for Jackson Hole Conservation Alliance: 2/21/07