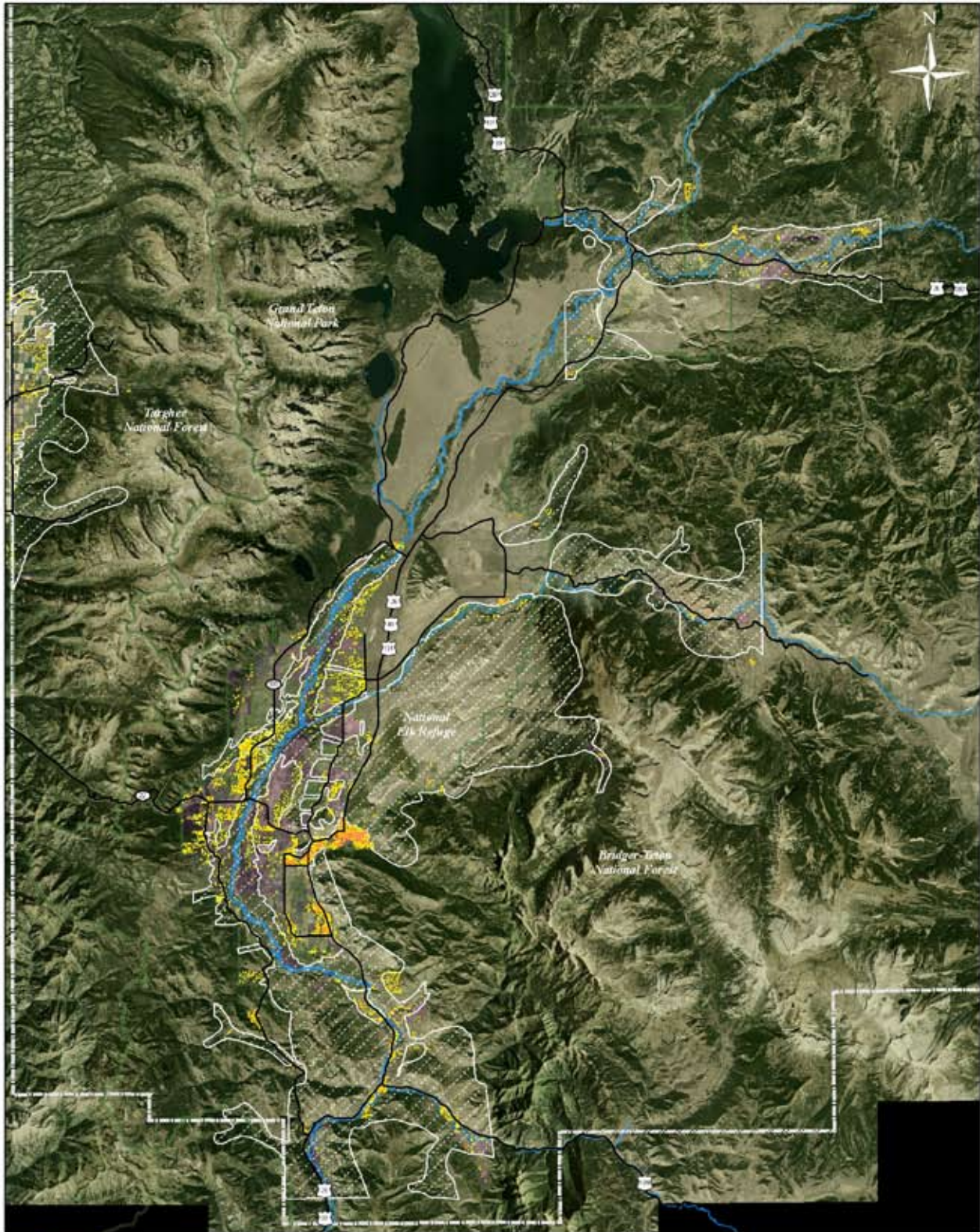


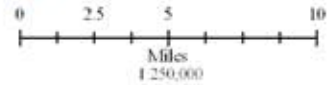
Building Density 2006



- 1 building/acre
- 2-3 buildings/acre
- 4-8 buildings/acre
- 9-23 buildings/acre

- NRO
- Conservation Easements
- Federal Land
- Private Land

- Teton County
- Major Roads



Building Density: Digitized from 2006 aerial photos (in NRO and 3000' buffer)
 Conservation Easements, Parcels, Roads and Administrative Boundaries: Teton County GIS Data Archive
 Aerial Photo: 2006 National Agricultural Imagery Program (NAIP)
 Map assembled by Conservation Research Center for Jackson Hole Conservation Alliance, 2/13/08