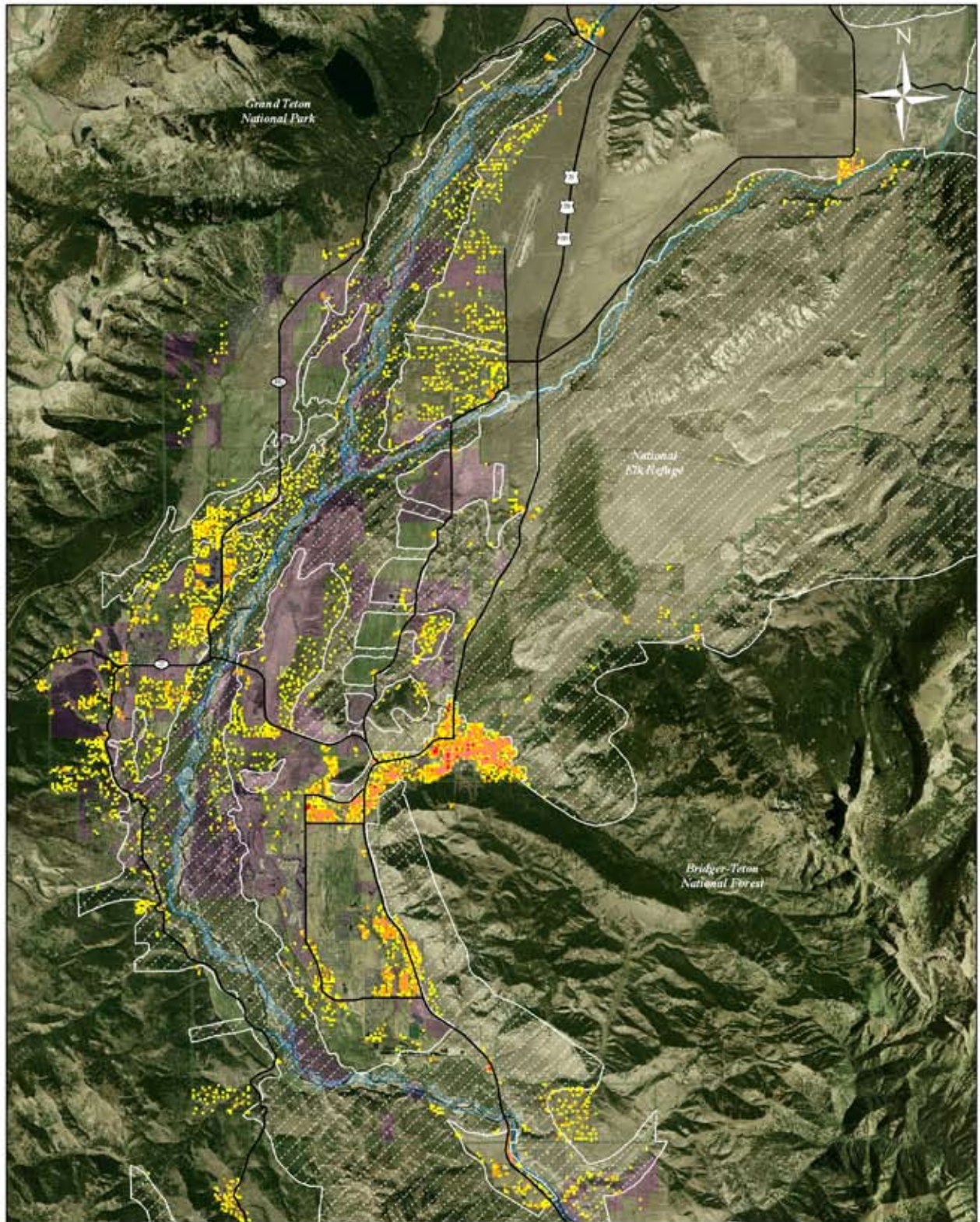
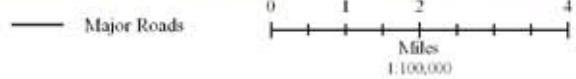


Building Density 2006



- | | | | |
|---|------------------------|---|------------------------|
|  | 1 building/acre |  | NRO |
|  | 2-3 buildings per acre |  | Conservation Easements |
|  | 4-8 buildings per acre |  | Federal Land |
|  | 9-19 buildings/acre |  | Private Land |



Building Density: Digitized from 2006 aerial photos (NRO and 3000 foot buffer)
 NRO, Conservation Easements, Parcels, Roads and Administrative Boundaries: Teton County GIS Data Archive
 Aerial Photo: 2006 National Agricultural Imagery Program (NAIP)
 Map assembled by: Conservation Research Center for Jackson Hole Conservation Alliance 2/13/08