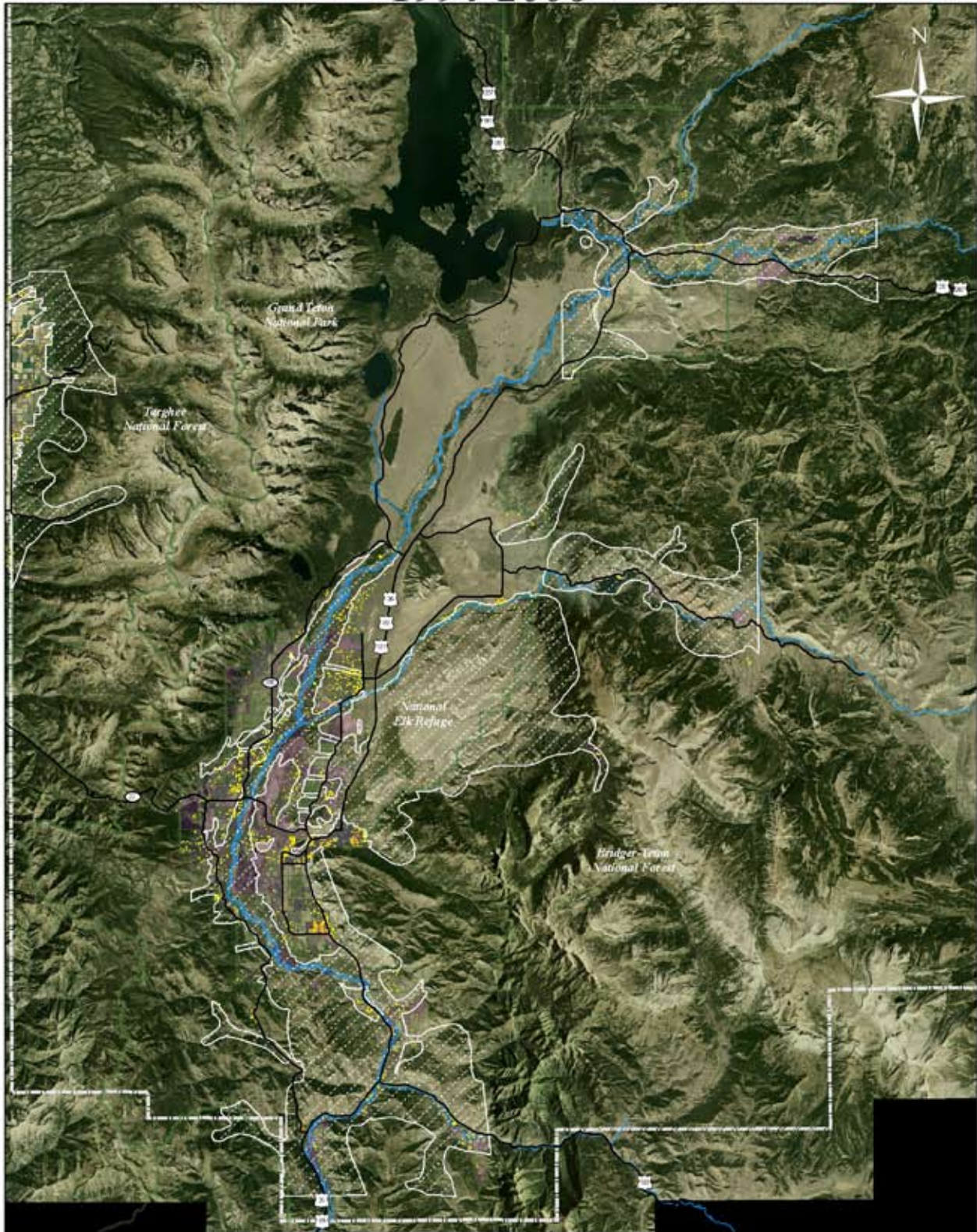


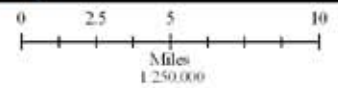
Building Density Added 1994-2006



- 1 building/acre
- 2-3 buildings/acre
- 4-8 buildings/acre
- 9-12 buildings/acre

- NRO
- Conservation Easements
- Federal Land
- Private Land

- Teton County
- Major Roads



Building Density: Digitized from 1994 and 2006 aerial photos (NRO and 2009 buffer)
 Conservation Easements, Parcels, Roads and Administrative Boundaries: Teton County GIS Data Archive
 Aerial Photo: 2006 National Agricultural Imagery Program (NAIP)