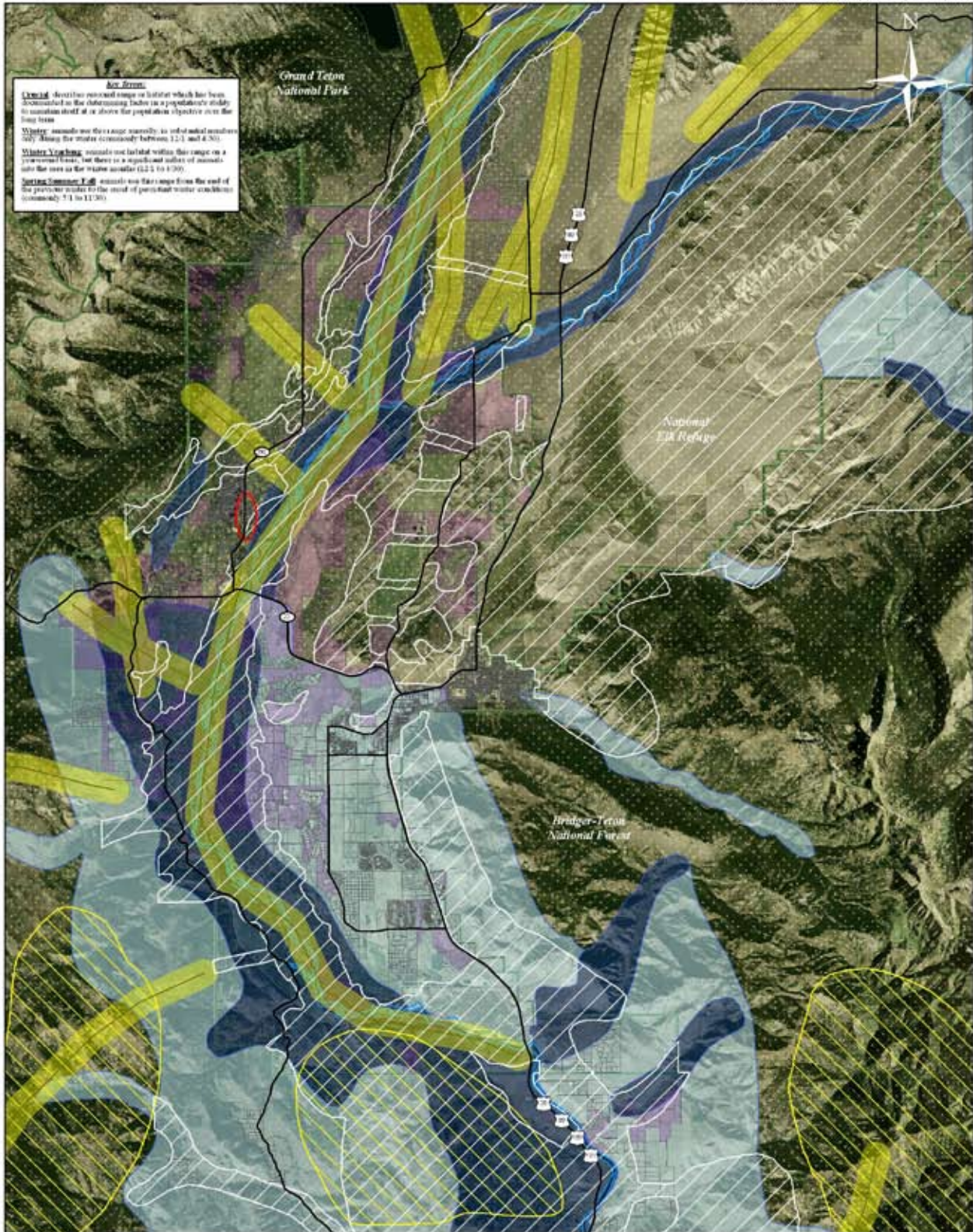


Moose Habitat



Key:

Crucial Winter: Areas that present range or habitat which has been documented in the aforementioned index as a population's ability to maintain itself at or above the population objective over the long term.

Winter: animals use this range seasonally in critical winter months only. Range for winter commonly between 12/1 and 4/30.

Winter Yearlong: animals use habitat within this range on a year-round basis, but there is a significant influx of animals into the area in the winter months (12/1 to 4/30).

Spring/Summer/Fall: animals use this range from the end of the previous winter to the onset of persistent winter conditions (commonly 5/1 to 11/30).

Crucial Winter	NRO	Major Roads	0 1 2 4 Miles 1:100,000
Crucial Winter Yearlong Range	Conservation Easements		
Winter/Winter Yearlong Range	Federal Lands		
Spring/Summer/Fall Range	Private Lands		
Parturition Areas	Migration Routes (0.5 mi. buffer)		
Moose Vehicle Collision Hot Spot			

Wildlife Vehicle Collision Hotspots: Jackson Hole Roadway and Wildlife Crossing Study, 2003. Data Research and Consulting, Inc. and Jackson Hole Wildlife Foundation

Seasonal Range, Migration Routes and Parturition Areas: WGF and the Wyoming Open Spaces Institute

NRO: Conservation Easements, Forest, Road and Administrative Boundaries: Teton County GIS Data Archive

Aerial Photo: 2006 National Aerial Imagery Program (NAIP)

Map assembled by the Conservation Research Center for Jackson Hole Conservation Alliance 7/21/07